

Barcelona College of Chiropractic



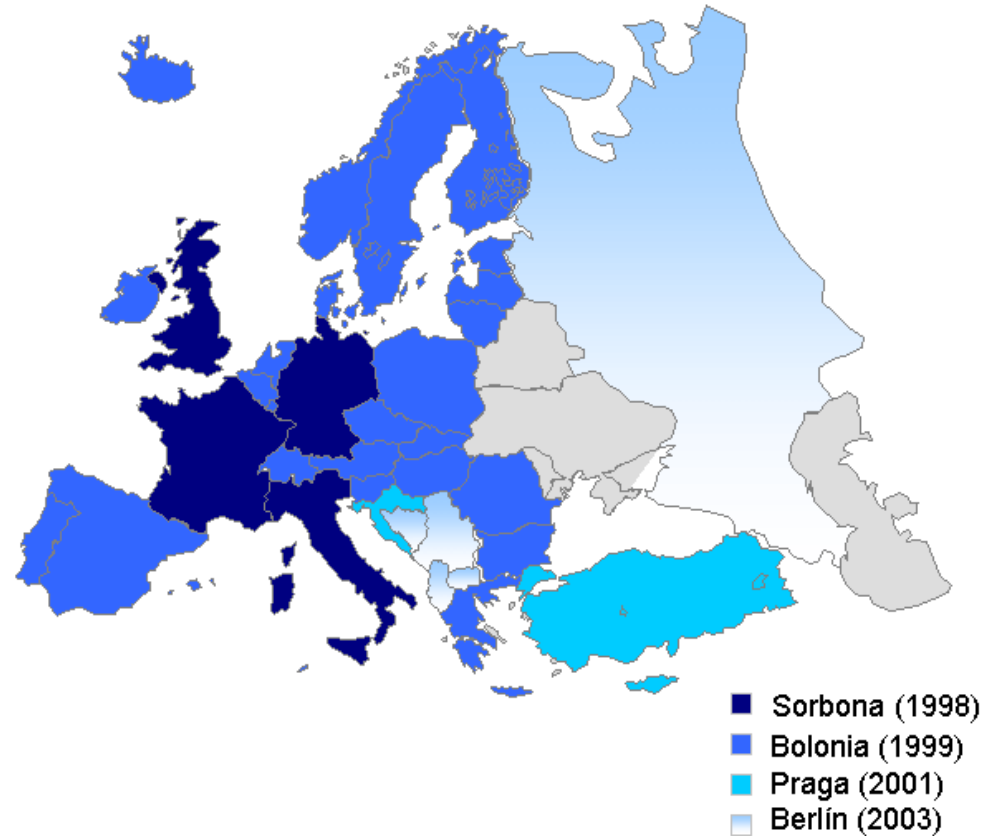
Adrian B. Wenban, B.Sc., B.App.Sc., M.Med.Sc., P.Gr.Cert.(Med Ed).



A BRIEF INTRODUCTION

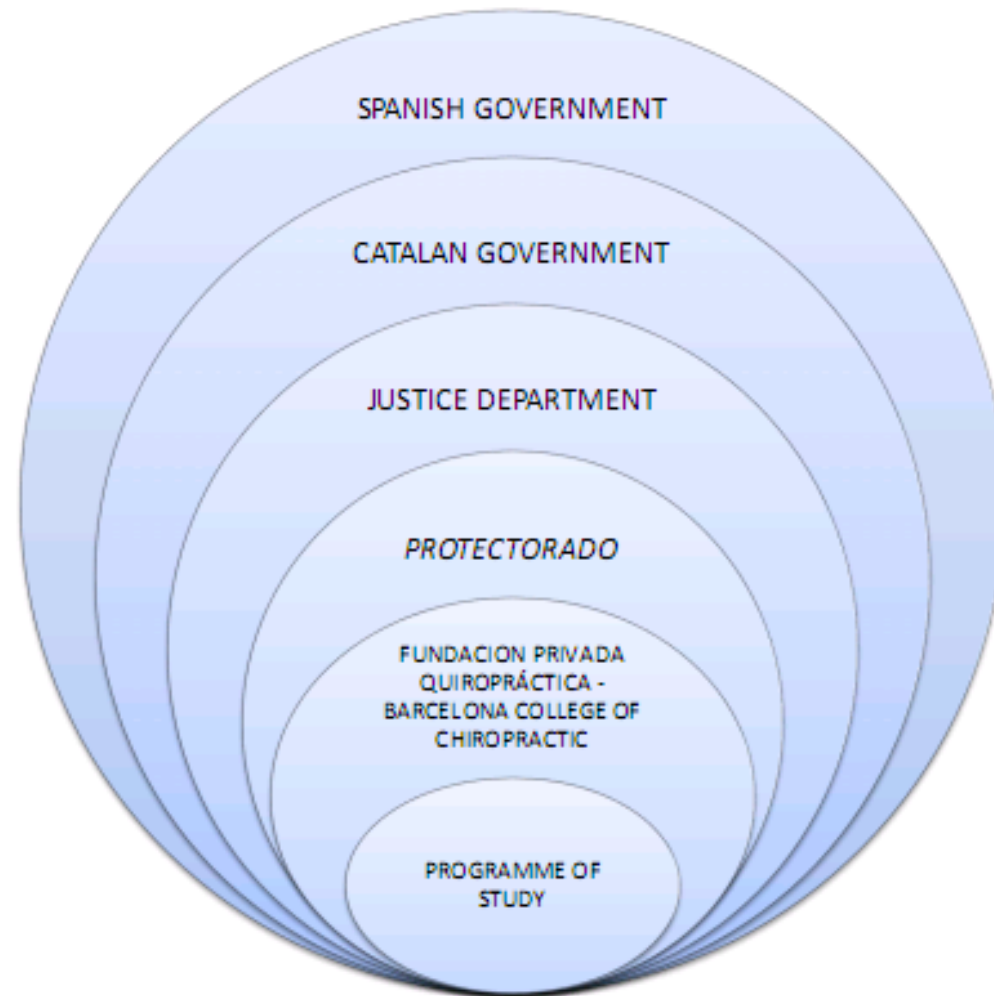
The Bologna Process

Named after the [Bologna Declaration](#), which was signed in the Italian city of Bologna on 19 June 1999 by ministers in charge of higher education from 29 European countries. Today, the Process unites [47 countries](#)





Incorporated under the laws of Spain

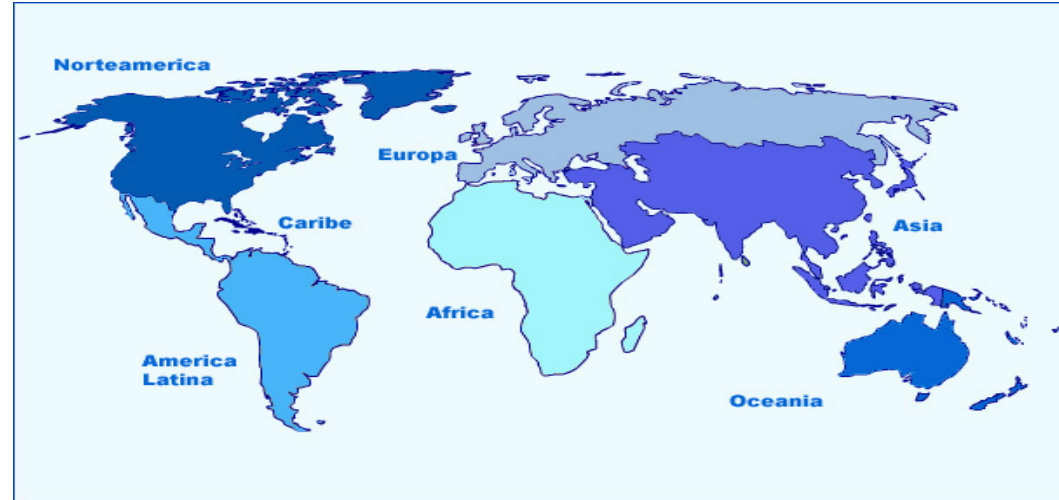




Mission

Our mission is to deliver a program of study that leads to the graduation of compassionate, bilingual chiropractors committed to the pursuit of personal development and excellence, and capable of integrating the philosophy, science and art of chiropractic in providing high quality cost-effective chiropractic care.

WHY DO THIS?



There are only approx 80,000 chiropractors in the world.

- **USA: 1 Chiropractor for every 3,500 inhabitants**
- **CANADA: 1 Chiropractor for every 5,300 inhabitants**
- **AUSTRALIA: 1 Chiropractor for every 5,000 inhabitants**
- **ESPAÑA: 1 Chiropractor for every 200,000 inhabitants**

COLLABORATION



BCC
Barcelona College of Chiropractic
ESCUELA SUPERIOR INTERNACIONAL



UNIVERSITAT
POMPEU FABRA

BCC @ Spanish public University



● Universitat Pompeu Fabra

132 Balmes St., Barcelona

Universitat Pompeu Fabra



- ONE OF THE TOP 5 PUBLIC UNIVERSITIES IN SPAIN
- BCC HAS 5 SEPERATE CONTRACTUAL AGREEMENTS WITH THE UPF
- THE UPF WILL AWARD A MASTER OF CHIROPRACTIC TO BCC GRADUATES.



www.upf.edu

The Research of the UPF has the Most Impact in Spain

- The research of the Pompeu Fabra University obtained the highest impact in Spain between 2005 and 2012, according to the report titled - Indicadors de recerca i innovació de les universitats públiques Espanya.
- On average, Catalan researchers are 80% more productive than the Spanish average and the quality of the research carried out in Catalonia positions all the public universities with an impact higher than the world average.
- In the Spanish sphere, the three centres which obtained the highest impact between 2005 and 2009 were, in this order, the Pompeu Fabra University, the University of Barcelona and the Rovira i Virgili University.

In seeking public university affiliation and collaboration, we defined for ourselves
3 NO CROSS LINES

- Maintain control of finances
- Maintain control of curriculum
- Maintain control of staffing

BCC Frame of Reference

- PRIVATE COLLEGE OF CHIROPRACTIC REGISTERED WITH THE CATALAN GOVERNEMENT BY WAY OF A NONPROFIT GOVERNMENT REGISTERED FOUNDATION
- PUBLIC UNIVERSITY AFFILIATED
- LOCATED BARCELONA CITY CENTRE
- A BILINGUAL INSTITUTION WITH A BILINGUAL PROGRAM OF STUDY



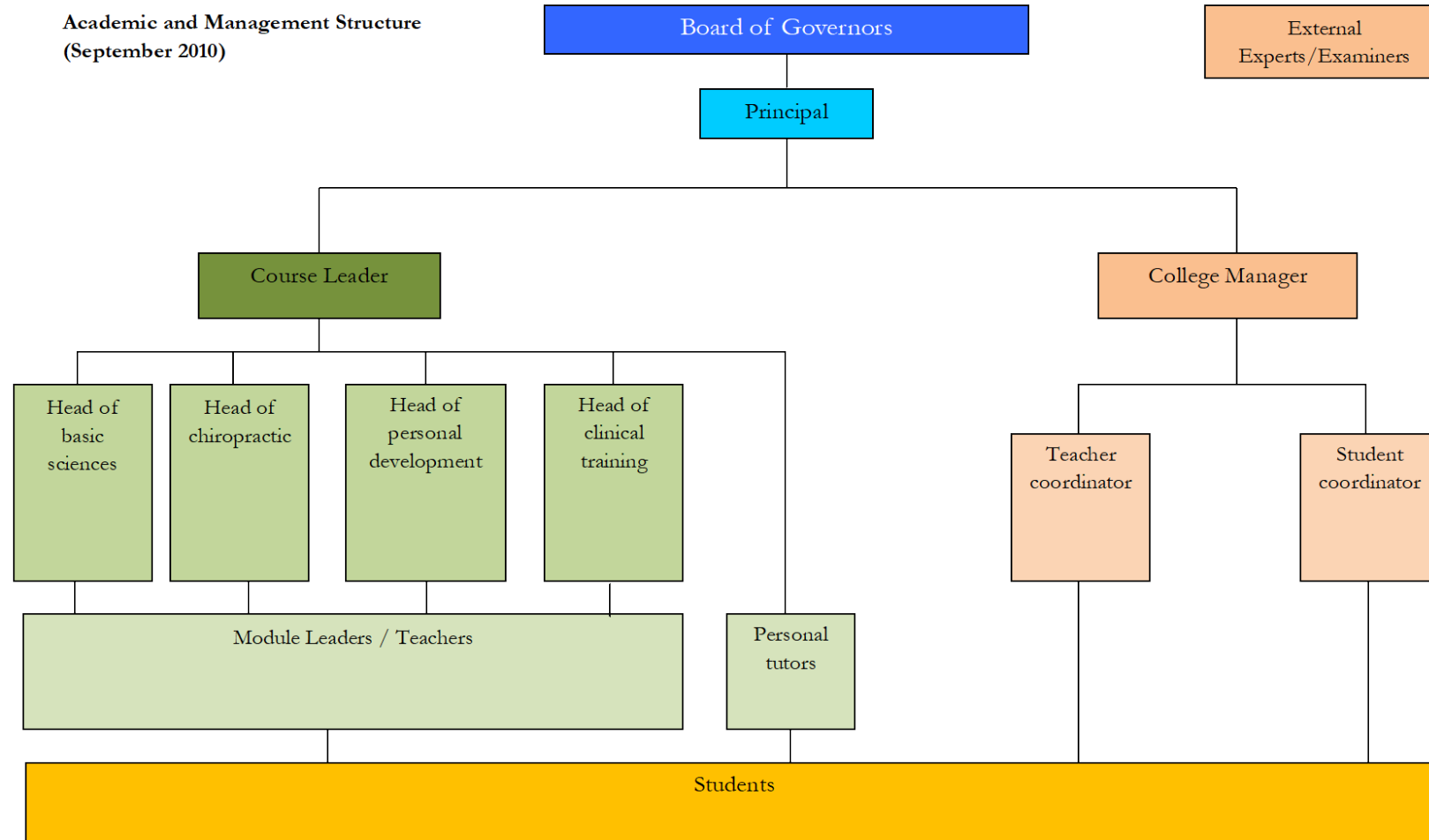
Programme of Study

- Five year (4+1 structure)
- Full-time
- Credits – 300 ECTS credits
- 7500 Total Learning Hours (TLHs)

CURRICULAR STRUCTURE

- GRADUATE COMPETENCY-BASED
- OUTCOME BASED
- START WITH THE END IN MIND
- 7 CORE COMPETENCIES BUILT OUT OF CANMeds -
 - **Chiropractor**
 - **Leader / Manager**
 - **Professional**
 - **Scholar**
 - **Health Advocate**
 - **Communicator**
 - **Collaborator**

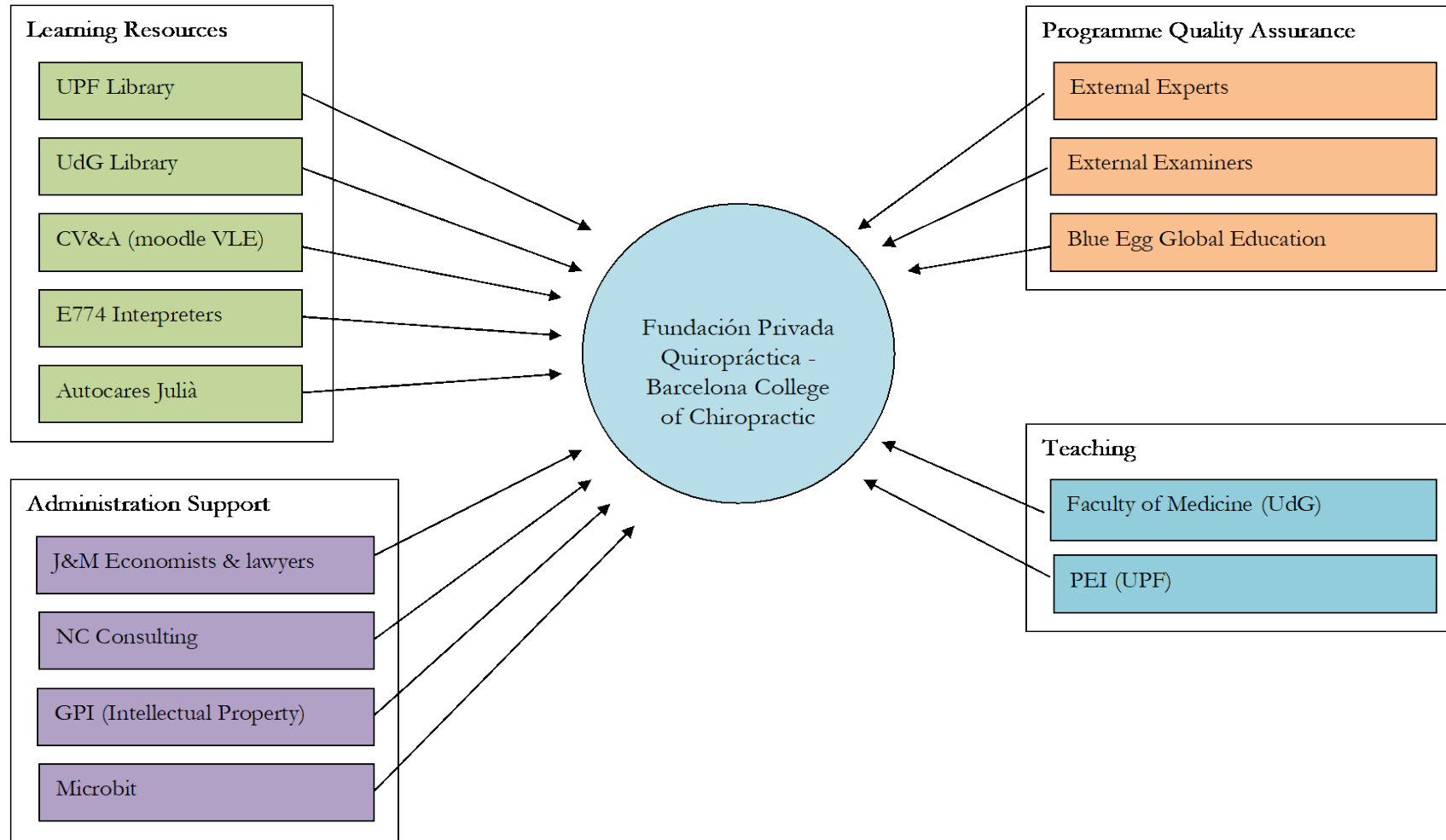
BCC Academic and Management Structure (2018)





Outsourced Services for the FPQ-BCC (2018)

Outsourced Services for the Fundación Privada Quiropráctica -Barcelona College of Chiropractic



BCC Full-time Staff



BCC TIMETABLE 2016-17

Semester I

	MONDAY	TUESDAY	WEDNESDAY	THURSDAY	FRIDAY
8:00- 8:30	CS Adrian Wenban	HSF II Marisol Estrems	HSF II Marisol Estrems	HSF II Group 2 Marisol Estrems	Travel Time
8:30- 9:00					
9:00-9:30	CBCT I Martyn Walker				
9:30-10:00					
10:00-10:30					
10:30-11:00					
11:00-11:30		N Mercè Martínez	HT David Ranz	Cs ^{ae} Adrian Wenban	
11:30-12:00	CBCT I Group 1 ^c Martyn Walker		PD Adrian Wenban	CBCT I Group 1 ^c Martyn Walker	PG ^b
12:00-12:30		N Group 1 ^c Mercè Martínez			
12:30-13:00			HT Group 1 ^c David Ranz		
13:00-13:30			HT Group 2 ^c David Ranz		
13:30-14:00	CBCT I Group 2 ^c Martyn Walker	N Group 2 ^c Mercè Martínez		CBCT I Group 2 ^c Martyn Walker	
14:00-14:30			HT Group 2 ^c David Ranz		Travel Time
14:30-15:00					
15:00-15:30					
15:30-16:00					
16:00-16:30				L ^d	
16:30-17:00					
17:00-17:30					
17:30-18:00					

CBCT I: Clinical Biomechanics and Chiropractic Technique I

CS: Chiropractic in Society I

HSF II: Human Structure and Function II

HT: Introduction to the Study of Human Tissues

L: Spanish or English Language

PG: Practicals in Girona

PD: Personal Development, Planning and Reflective Practice I

Lectures
Seminars
Laboratory practicals

a) Alterantive weeks for students

b) Practicals Girona : six practicals on HSF II during the semester II

c) CBCT I practicals: C/.Mallorca 364

d) Language: UPF ciutadella campus

e) IDEC: UPF

Simultaneous Translation



Simultaneous Translation



UAB' s Dissection Labs



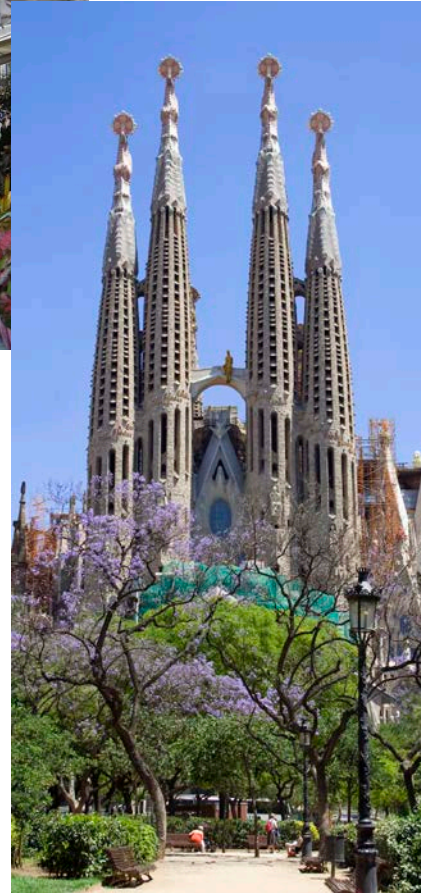
BARCELONA – THE CAPITAL OF CATALUÑA



QUALITY OF LIFE



HISTORY



CULTURE



SPORTS



BEACHES



BCC Off Campus Chiropractic Clinical Training Facility

May 2016

Members of BCC Senior Staff



BCC Clinical Training Facility Reception



BCC Clinical Training Facility



BCC Clinical Training facility Treatment Room



BCC Clinic Director's Office



BCC Clinical Training Staff Office



BCC Clinical Training facility Learning Resource Center



BCC Clinical Training facility Learning Resource Center



BCC Clinical Training facility Lecture Room



BCC Clinical Training facility Lecture Room



BCC Clinical Training facility radiographic positioning



BCC Clinical Training facility Student Area



BCC Clinical Training facility Treatment Room



UPF Libraries



UPF Libraries





THANK YOU